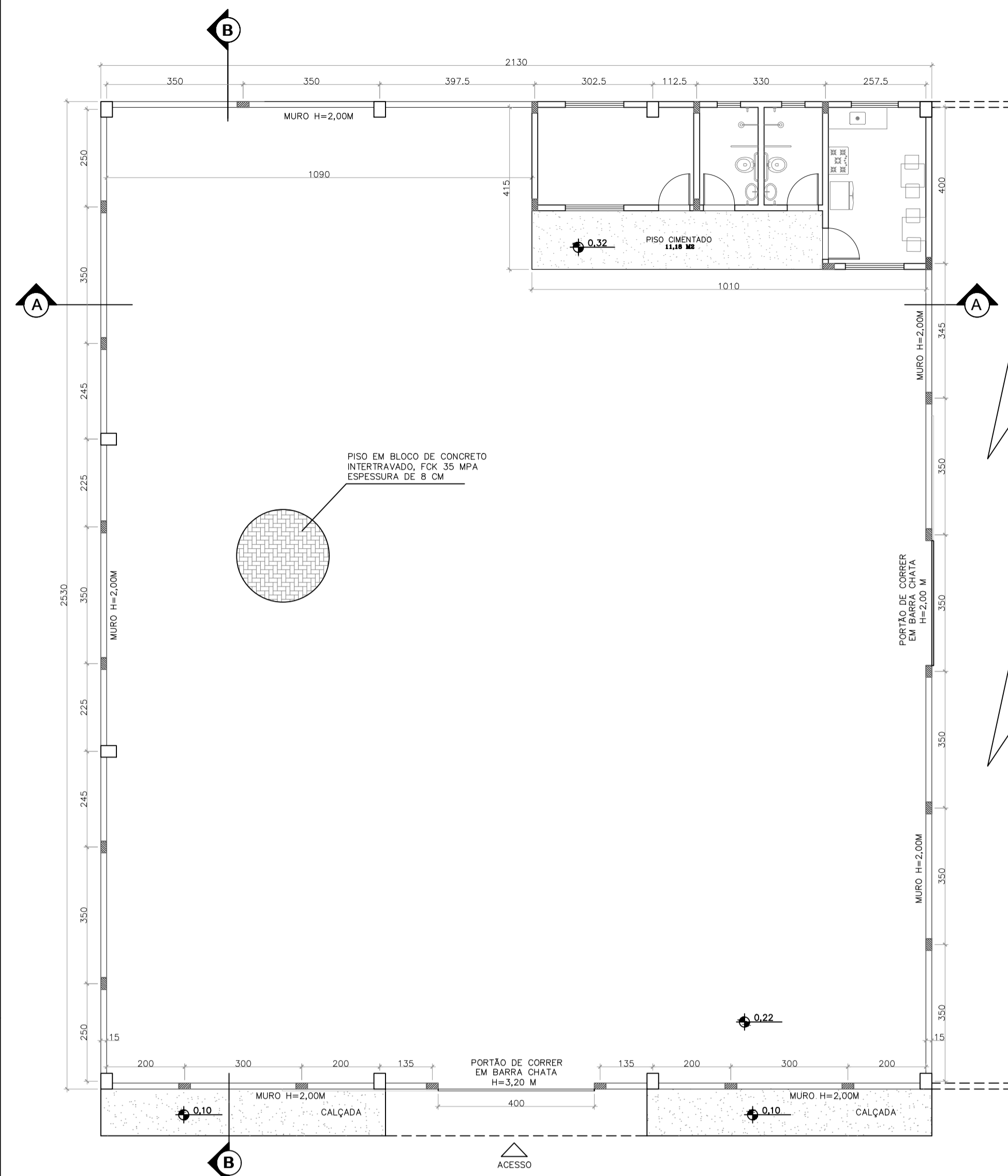
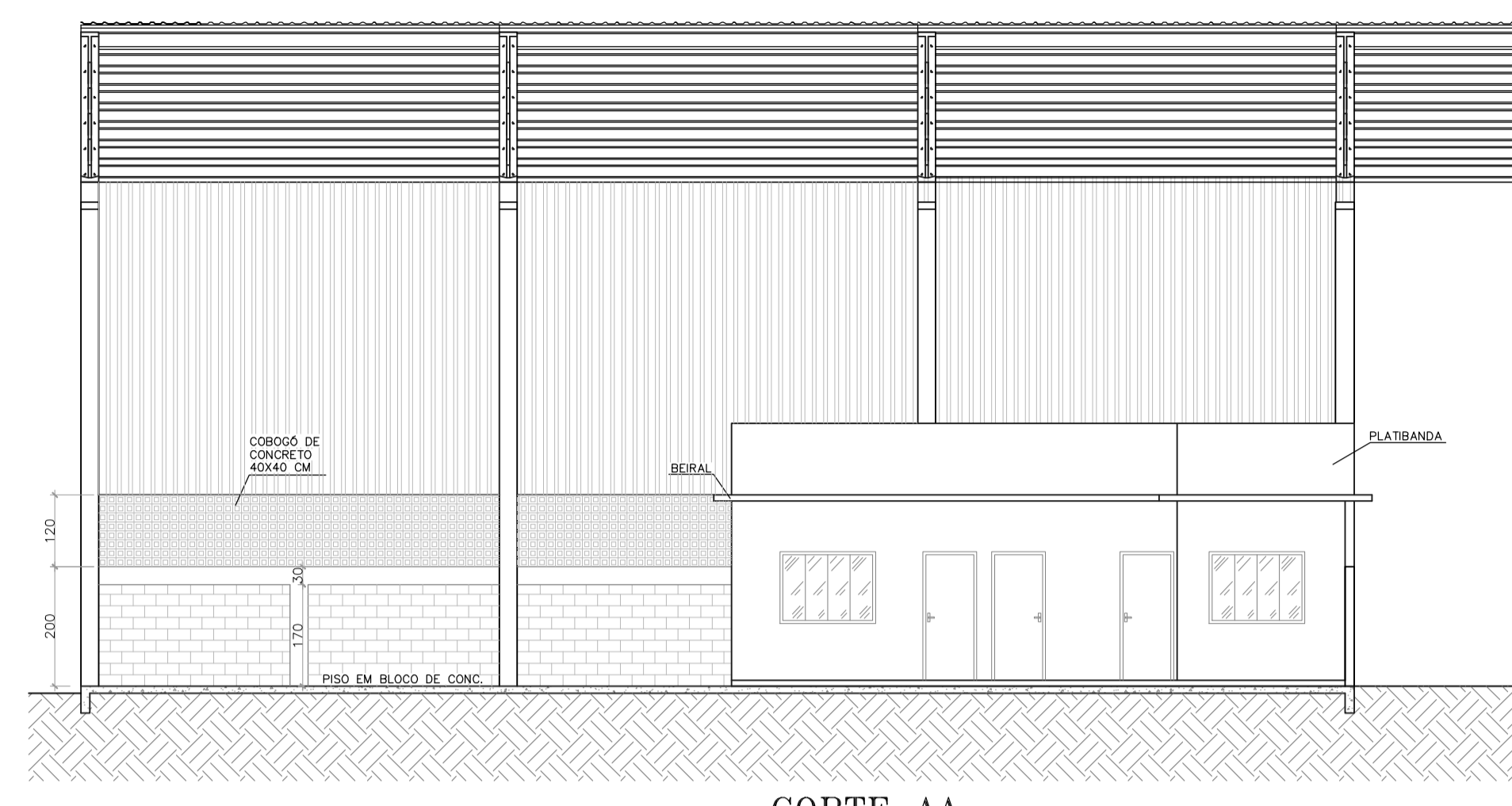


DEPENDÊNCIAS

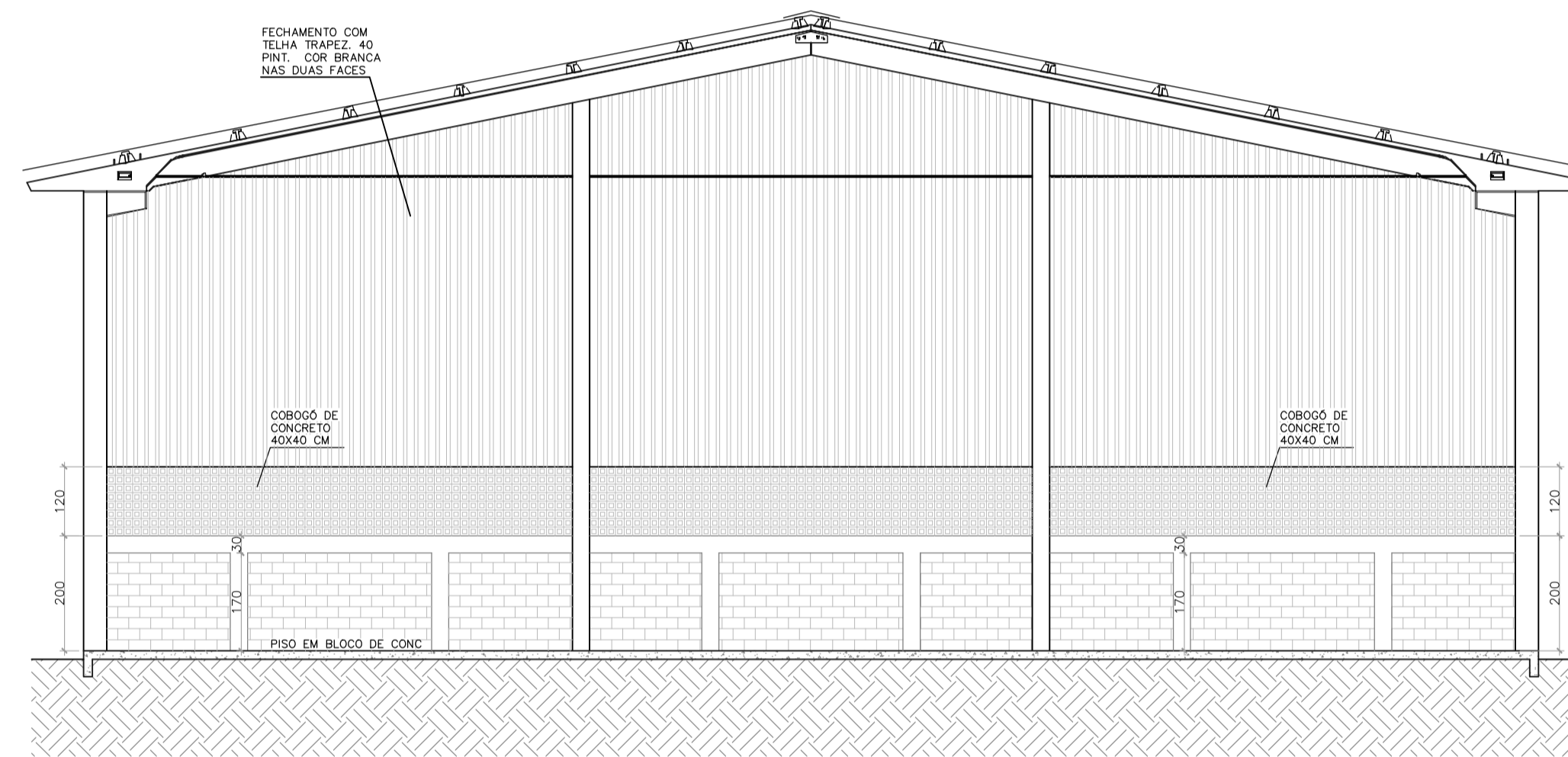
ESC. 1:50



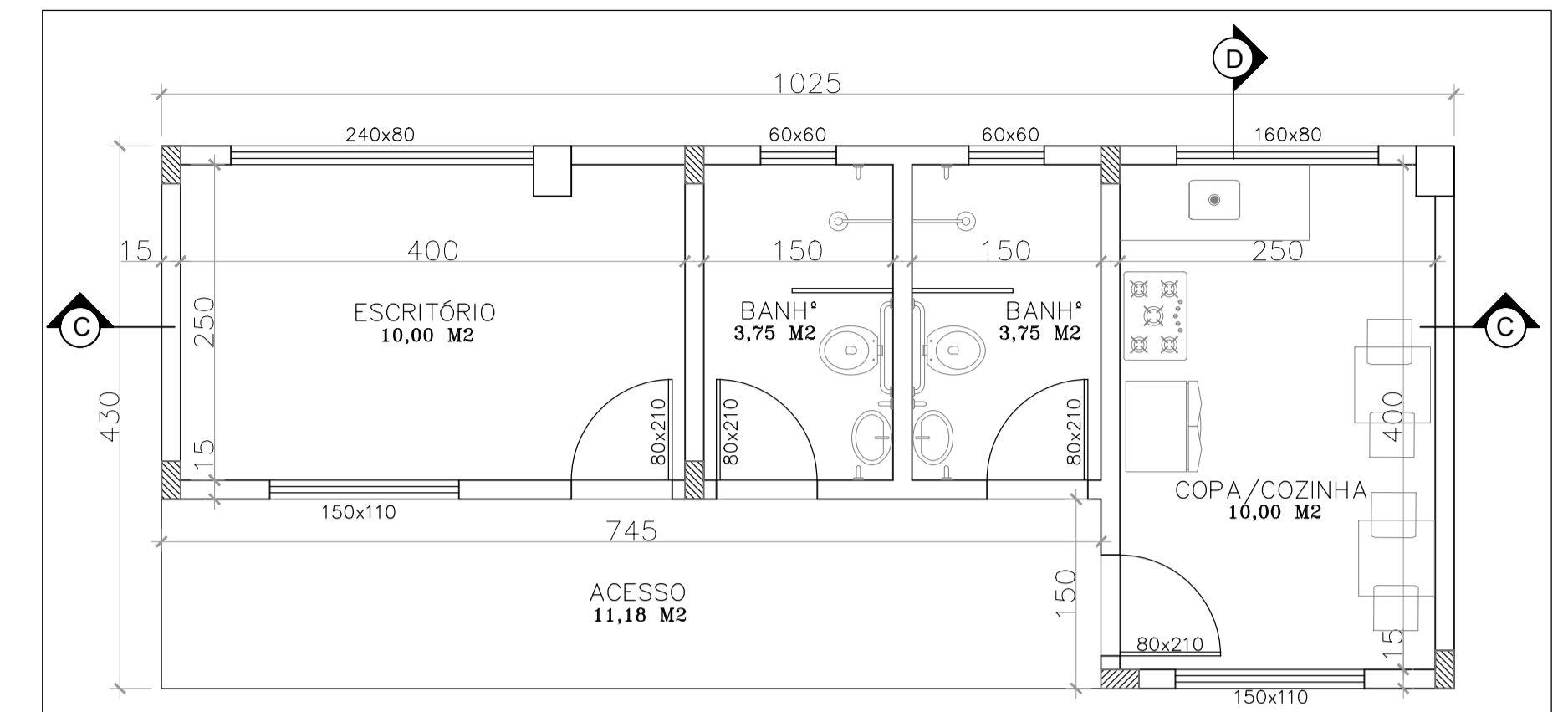
PLANTA BAIXA GALPÃO  
ÁREA = 538,90 M<sup>2</sup>



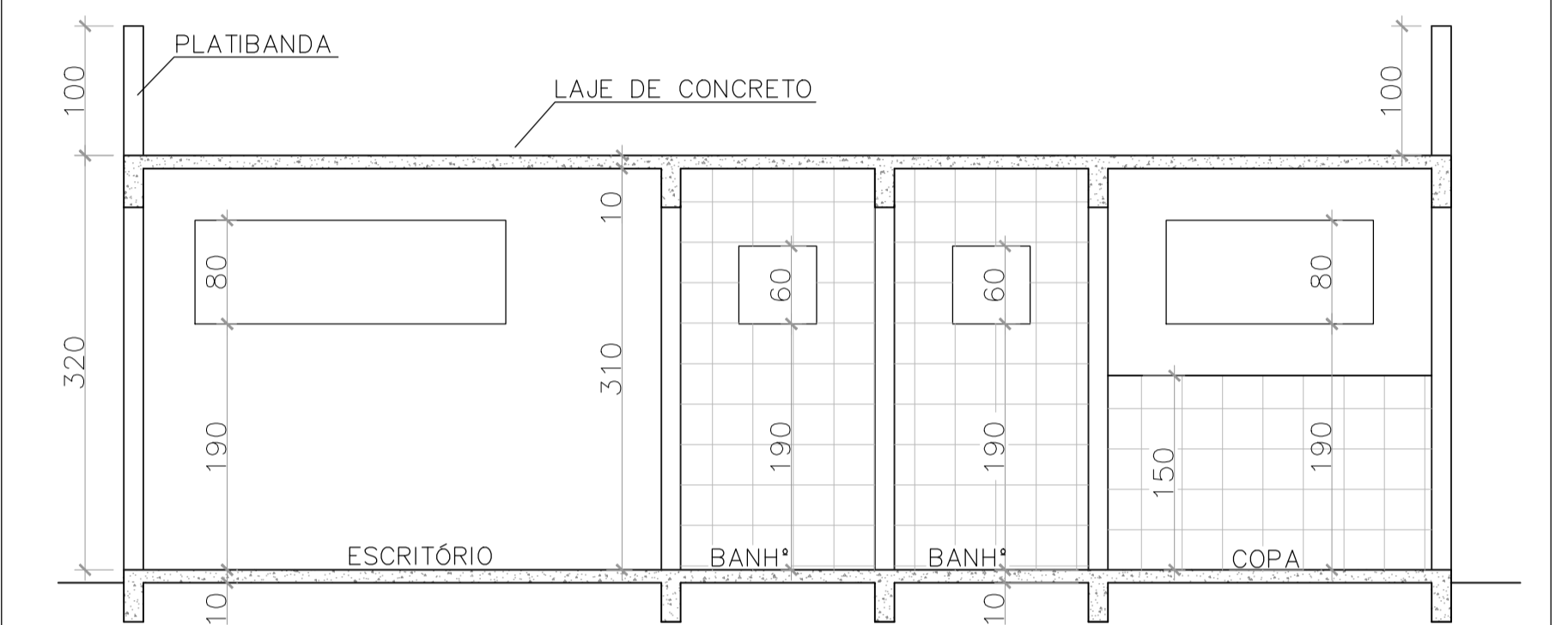
CORTE AA



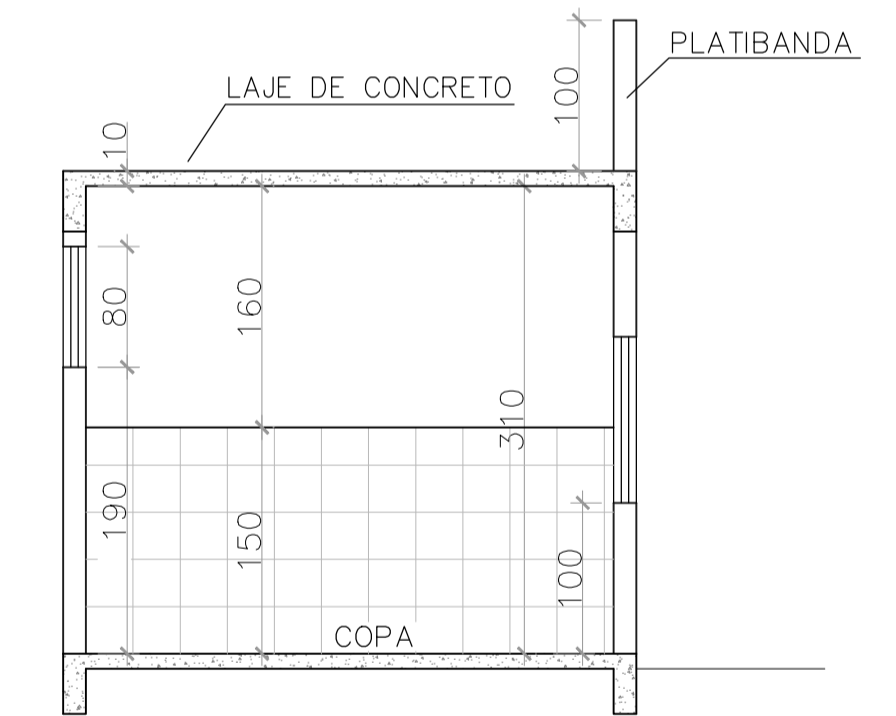
CORTE BB



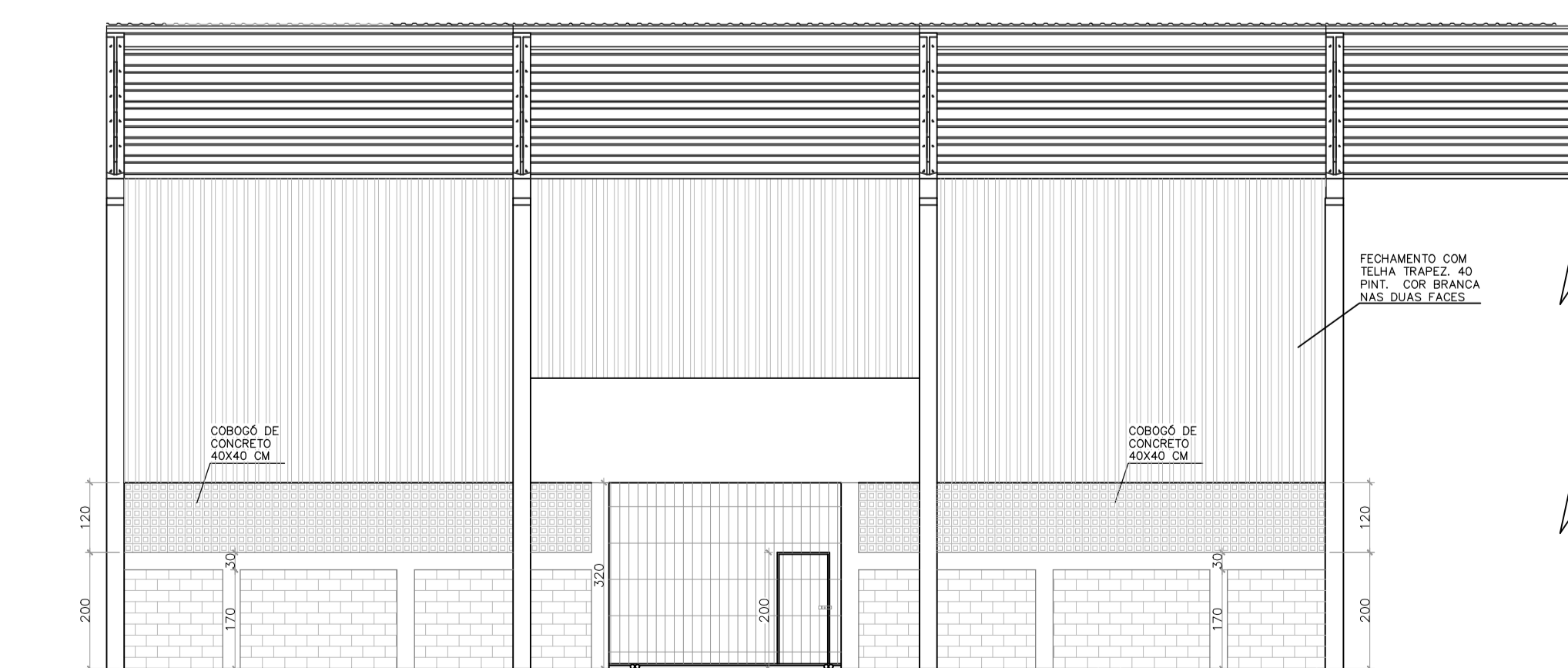
PLANTA BAIXA  
ÁREA = 44,08 M<sup>2</sup>



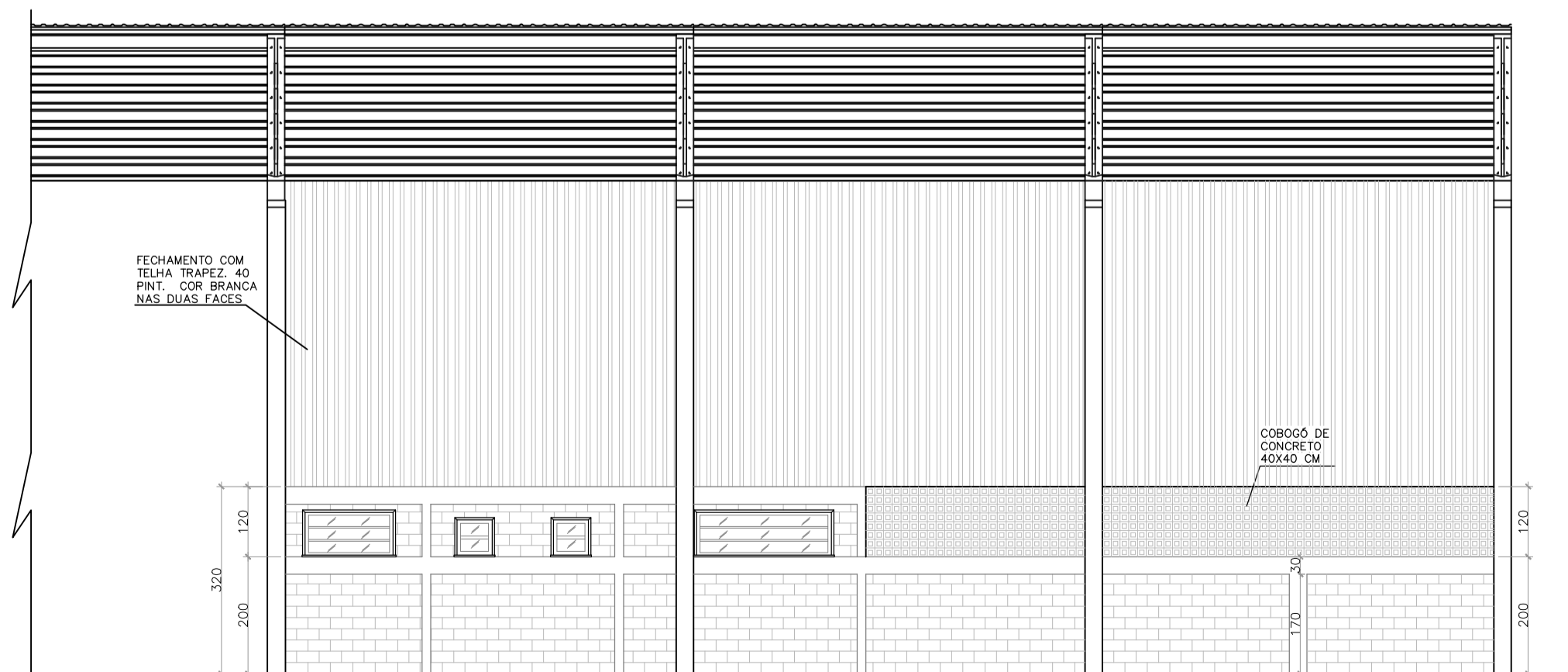
CORTE CC



CORTE DD



FACHADA FRONTAL



FACHADA FUNDOS

	PREFEITURA MUNICIPAL DE ATÍLIO VIVACQUA - ES SECRETARIA MUNICIPAL DE OBRAS E SERVIÇOS URBANOS	
	MELHORIAS NO GALPÃO DE RECICLAGEM - PARTE 2	
LOCAL: Rodovia Honório Fraga, S/N, Vila Nova - Atílio Vivacqua/ES		
CONTEÚDO: PROJETO ARQUITETÔNICO		
ESCALA: 1:100 FOLHA: 1/1 REVISÃO: 00	ADMINISTRAÇÃO JOSEMAR MACHADO FERNANDES PREFEITO MUNICIPAL	DESENHO: MARCOS TADEU SILVA BARROS RESPONSÁVEL TÉCNICO PEDRO ABREU MACHADO ENG. CIVIL - CREA: RJ-2015107731/D